

Druvaa inSync - Five Step Guide



Windows XP/Vista

[The Guide explains a quick five step procedure to setup
Druvaa inSync client version 2.1]

Druvaa Software

Druvaa inSync

Version 2.1

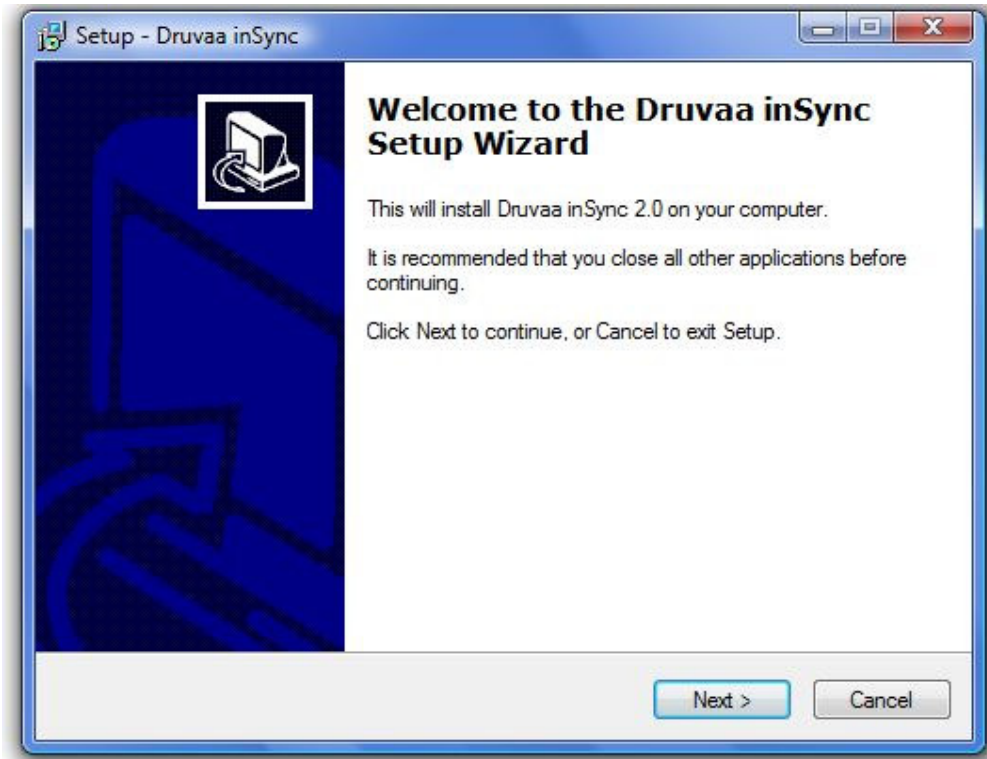
Doc. No. UG-100-003

docs@druvaa.com

7/28/2008

1.

Install Druvaa inSync Client



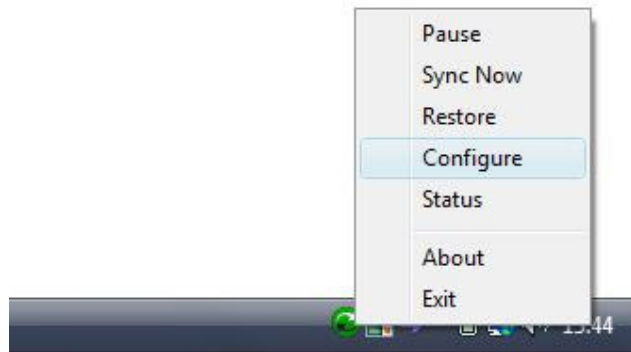
Download the Druvaa inSync client version 2.1 from local enterprise resources or Druvaa website (<http://www.druvaa.com/>) and start the installation.

The installation will take you through 5 simple screens to install the client. Once finished the inSync client automatically starts and is visible in the system tray.

2.

Configure Druvaa inSync Client in System Tray

To configure right click on the system tray icon and choose the option - “Configure”.



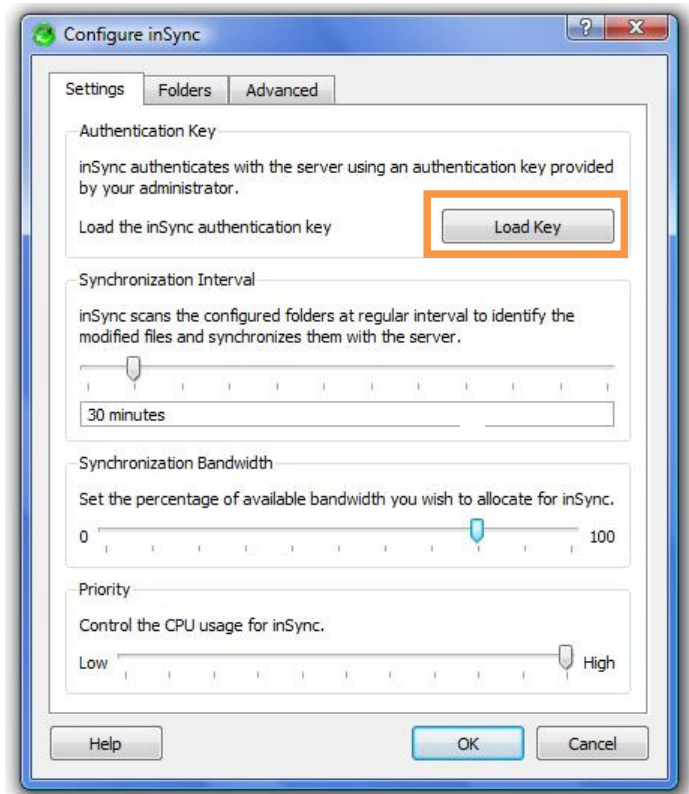
The other options besides configure are – “Restore”, “Sync Now” and “Pause”. Please refer to “Druvaa inSync Client User’s manual” for information regarding these options.

3.

Load inSync Client key

Use the “Load Key” Button to install the inSync client key file (.isk given by inSync administrator).

This installs the key and provides necessary connection and authentication information to the inSync client.



4.

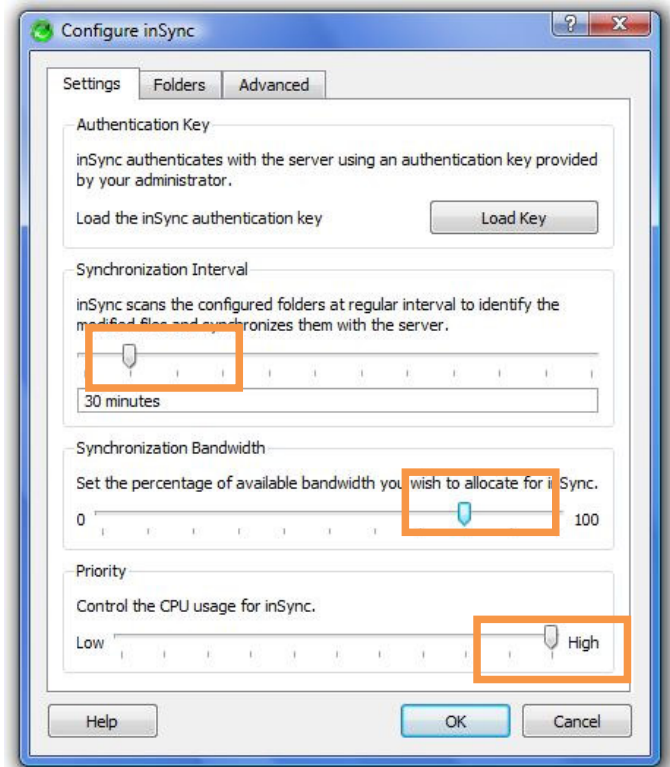
Choose Sync Window, Bandwidth and CPU Utilization

Choose a schedule to suit your backup needs. The minimum synchronization frequency is 1 hours.

Druvaa inSync uses **“Opportunistic Scheduling”** which means if backups have not occurred for last specified numbers of hours they are started immediately.

Choose the bandwidth limit (in percentage) which specifies the maximum bandwidth to be used by the client for all backup needs.

Choose maximum percentage CPU which would be utilized for backups



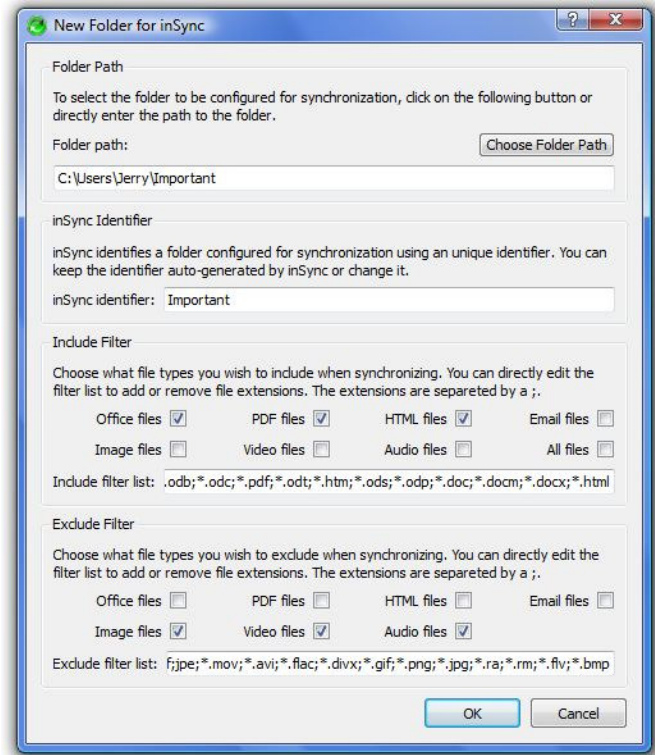
5.

Choose Folders to be Synced

Click on the “*Folders*” tab and choose the folders for synchronization. For ease of configuration, the inSync client lists three folders under “*Critical Data*” section which can be configured with a single click.

Clicking on the checkboxes pops “*New folder for inSync*” window which shows the path, unique identifier and filter for the folder.

If needed change filter options and path, and press “OK” to complete folder configuration.



For more information on custom folders and filters please read “Druvaa inSync Client Users manual”.

Commit configuration to start syncing.

Your inSync client is now configured and ready to automatically backup your critical data. You can choose to start initial sync immediately using the “*Sync Now*” option (left click inSync client in system tray and choose option) or wait till the next schedule to auto sync.

Breathe free. Now, your data is safe with inSync.

Finding more information

Please refer to “Druvaa inSync Client Users Manual” for detailed information. In case of any problem contact you system administrator.

For errors in the document or further clarification, please ask your admin to contact support@druvaa.com.