



Druva Phoenix: MSSQL Server Backup

Druva Phoenix is an enterprise-class, disk-based backup solution, optimized for remote and branch office servers. It offers a powerful, robust MSSQL Agent to provide high-performance online backup of MSSQL Server; enabling 24/7 availability of SQL databases.

The Phoenix MSSQL agent creates its backups based on snapshots provided by the Windows VSS framework in conjunction with the SQL Writer, creating first full and forever incremental backups based on these snapshots. These changes are further optimized using the unique deduplication feature to save a single copy of data duplicated across applications, locations and servers.



Features

Quick Configuration

The Phoenix MSSQL agent makes it easy to quickly configure MSSQL databases for backup. It allows the administrator to setup a backup schedule, notifications and retention policies which can be customized for each MSSQL database. The user-friendly GUI and comprehensive reporting allow the administrator to centrally manage backups.

Database-level Backup and Restores

The Phoenix MSSQL agent creates database backups rather than creating file backups of databases. The database level granularity allows a restored database to go online without any interruption or intervention. Since the agent is integrated with the VSS SQL Writer, it is possible to select individual databases for backup and restore. This makes restores a quick, one-step process.

Ever-Incremental Backups

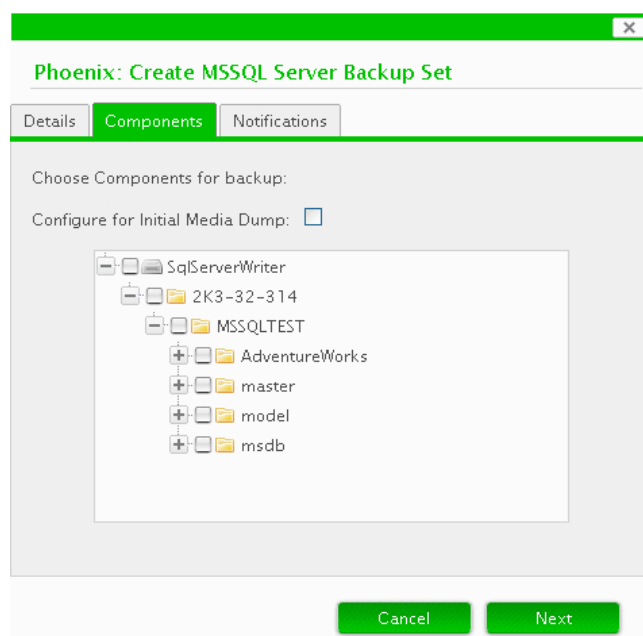
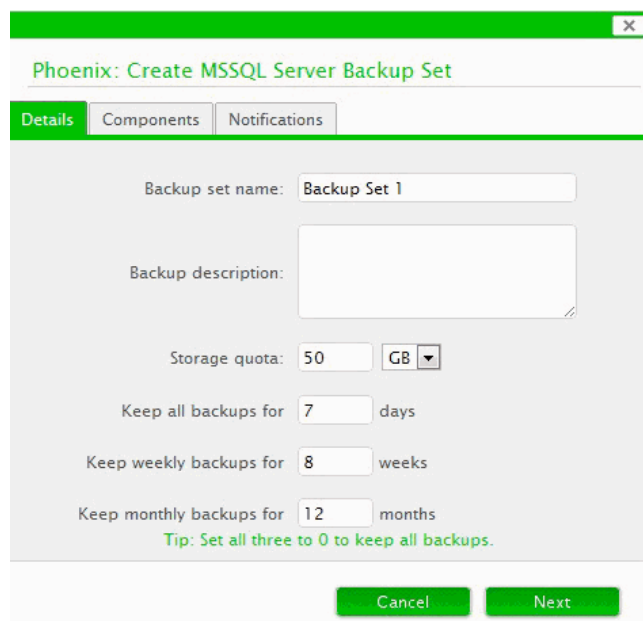
The Phoenix MSSQL agent considers only those files which have changed since the last backup. From within these files, only the changed blocks are synced with the server, ensuring that backups are forever incremental.

Flexible Retention Policy

Data retention policies are flexible and easily configurable using the Phoenix MSSQL agent. The administrator can use the same retention policy for all MSSQL databases or, configure exclusive policies for each database.

Notifications

The Phoenix MSSQL agent enables the administrator to receive email notifications which provide summary as well as detailed logs of all backups. This facilitates administration of the MSSQL backups.



Security

The Phoenix MSSQL agent uses backup agent initiated network connections. Entire network communication between the client and the server is encrypted using 256 bit SSL encryption. Backup storage is encrypted using advanced 256 bit AES encryption, ensuring end-to-end protection of the MSSQL databases.

Advantages

Advanced Data Deduplication

The MSSQL agent leverages Phoenix's global source-based data deduplication technology to save a single copy of data duplicated across applications, servers and locations. This guarantees 100% duplicate elimination; saving over 90% backup time, and lowering storage costs by 90%.

Continuous Data Protection

Using near-CDP, the Phoenix server maintains point-in-time copies of data with hierarchical restore points accessible by the MSSQL agent. During restore, a timeline view of the databases in the form of multiple restore points is displayed. Each restore point facilitates restoration of a database from any point in time.

WAN Optimization

The Phoenix MSSQL agent provides a flexible backup schedule to run hot backups at the most convenient times without requiring the backup window associated with traditional backup agents.

The Phoenix server provides smart bandwidth throttling based on percentage limits set for different available networks. It automatically calculates optimal packet size and makes the best use of available bandwidth, optimizing use of the backup window and saving over 90% bandwidth and backup time.

Supported Platforms

The Phoenix MSSQL agent supports the Server 2005/2008. Backups are created using the Volume Shadow Copy Service (VSS) framework provided by Windows in conjunction with Virtual Backup Device Interface (VDI).

The Bottom Line

Enterprises are increasingly dependent on databases for critical transactions. Considering exponential growth in data, they need to identify a database backup solution that fulfils their database protection needs while minimizing the backup and recovery downtime. The Phoenix MSSQL Agent is designed keeping mission critical databases in mind. It ensures backups are simple, secure and non-intrusive while uniquely leveraging data deduplication and near-CDP to define new standards of database server backup.

Druva Phoenix features simple setup and configuration, non-intrusive and high-performing backups, point-in-time restores coupled with patent-pending deduplication technology to offer unmatched backup performance and storage savings.

It's scalable up to 16TB of dedupe data and supports nearly 100 agents on a single backup server. With Phoenix, remote office backups are simple, secure, and completely non-intrusive.

Advantages:

- ✓ **Industry-first Application-Aware deduplication** offers 90% storage and bandwidth savings
- ✓ **Cost Reduction** with elimination of tape infrastructure and low storage growth
- ✓ **Multi-platform support** with database specific agents
- ✓ **High performance** with hypercache technology
- ✓ **Deployment Flexibility**
- ✓ **Ease of use** with quick installs and zero manual intervention
- ✓ **Centralized Administration**

Schlumberger



SIEMENS



Druva Software

www.druva.com

sales@druva.com

+1 408-600-2783

+44 20 3239 3251