



Exchange Server Backup

Druva Phoenix is an enterprise-class, disk-based backup solution, optimized for remote and branch office servers. It offers a powerful, robust agent to provide high-performance online backup of Exchange Server.

The Phoenix Exchange Backup agent offers First-full and Forever Incremental backup of the Exchange Server. It uses MAPI to backup and restore e-mails in conjunction with Powershell commands to retrieve information about databases and mailboxes from the Exchange server. The data is deduplicated during backup and hyperCache technology is used to boost the deduplication performance.



Features

Ever Incremental Backups

The Phoenix Exchange Backup agent considers only the new users and/or mailboxes, databases and mails which have changed since the last backup. Only the changed blocks are synced with the server, ensuring that backups are forever incremental.

Full-Featured Restores

The Phoenix Exchange Backup agent simplifies restores by offering hierarchical restore points. The contents of the restore point are listed hierarchically as Exchange servers, databases, public folders (if selected for backup), mailboxes, and mail items, any of which can be selected and restored on the client, as required.

In case of disaster recovery, the agent makes it possible to restore an entire Exchange server to fresh hardware using previously backed up Exchange Configuration Data and the Mailbox Data.

Message-Level Recovery

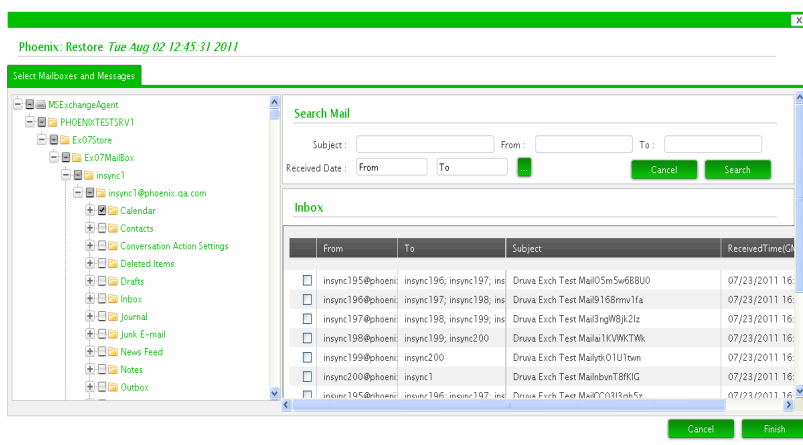
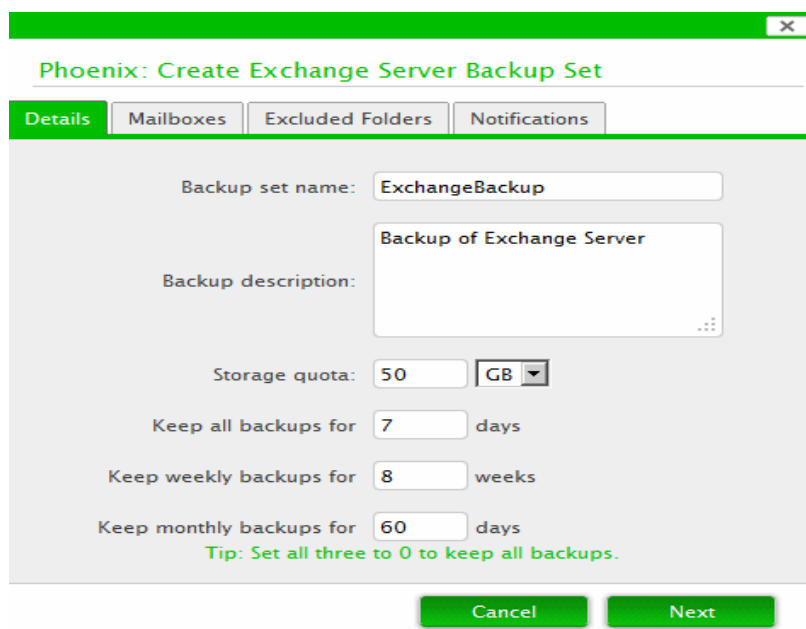
The Phoenix Exchange Backup agent provides an interface to browse through the contents of a mailbox folder. The interface is search-enabled so that specific messages, calendar events, notes, journal entries, contacts or tasks can be found and restored as needed.

Flexible Retention Policy

Data backup schedules and retention policies are flexible and easily configurable using the Phoenix Exchange Backup agent. The administrator can use the same backup schedules and retention policies for all backup sets or, configure exclusive policies for each backup set.

Archived Folder Backup and Restore

The Phoenix Exchange Backup agent supports backup and restore of archived folders. If archived folders have been selected for backup, these are restored when the associated primary mailbox is restored.



Supported Platforms

The Phoenix MS Exchange Backup agent supports **Exchange Versions:** 2007 SP3, 2010 SP1, **OS Versions:** Windows Server 2003, Windows Server 2008 R2 and **MAPI Version:** 6.5.8211.0 onwards.

Centralized Administration

The Phoenix Exchange Backup agent is easy to configure and allows remote administration of backups. The administrator can setup backup schedules, notifications and retention policies which can be customized for each backup set. The user-friendly GUI and comprehensive reporting and allow convenient management of backups.

Notifications

The Phoenix Exchange Backup agent enables the administrator to receive email notifications which provide summary as well as detailed logs of all backups. This facilitates remote administration of the Exchange Backups.

Security

The Phoenix Exchange Backup agent uses backup agent initiated network connections. Entire network communication between the client and the server is encrypted using 256 bit SSL encryption. Backup storage is encrypted using advanced 256 bit AES encryption, ensuring end-to-end protection of the backup sets.

Advantages

Advanced Data Deduplication

The Phoenix Exchange Backup agent leverages Phoenix's global source-based data deduplication technology to save a single copy of data duplicated across applications, servers and locations. This guarantees 100% duplicate elimination; saving over 90% backup time, and lowering storage costs by 90%.

Continuous Data Protection

Using near-CDP, the Phoenix server maintains point-in-time copies of data with hierarchical restore points accessible by the Exchange agent. During restore, a timeline view of the backup sets (mailboxes, databases and messages) in the form of multiple restore points is displayed. Each restore point facilitates restoration from any point in time.

WAN Optimization

The Exchange Backup agent provides a flexible backup schedule to run hot backups at the most convenient times without requiring the backup window associated with traditional backup agents.

The Phoenix server provides smart bandwidth throttling based on percentage limits set for different available networks. Engineered to endure intermittent network failures and high latencies while trying to complete backups over WAN, it automatically calculates optimal packet size and makes the best use of available bandwidth. This especially helps centralized backups of remote office servers by optimizing use of the backup window and saving over 90% bandwidth and backup time.

The Bottom Line

Enterprises are increasingly dependent on Exchange for communication. Considering exponential growth in data, they need to identify a database backup solution that fulfils their exchange server protection needs while minimizing the backup and recovery downtime. The Phoenix Exchange Server Backup agent ensures backups are simple, secure and non-intrusive while uniquely leveraging data deduplication and near-CDP to define new standards of Exchange Server backup.

Our Customers Include:



Druva Phoenix features simple setup and configuration, non-intrusive and high-performing backups, point-in-time restores coupled with patent-pending deduplication technology to offer unmatched backup performance and storage savings.

It's scalable up to 16TB of dedupe data and supports nearly 100 agents on a single backup server. With Phoenix, remote office backups are simple, secure, and completely non-intrusive.

Advantages:

- ✓ **Industry-first Application-Aware deduplication** offers 90% storage and bandwidth savings
- ✓ **Cost Reduction** with elimination of tape infrastructure and low storage growth
- ✓ **Multi-platform support** with database specific agents
- ✓ **High performance** with hyperCache technology
- ✓ **Deployment Flexibility**
- ✓ **Ease of use** with quick installs and zero manual intervention
- ✓ **Centralized Administration**

Druva Software

+1 408-600-2783

+44 20 3239 3251

www.druva.com

sales@druva.com